

# KAUPIN KESÄKISA



**Oil Pattern Distance:** 42 Feet      **Reverse Brush Drop:** 36 Feet      **Oil Per Board:** 40 uL  
**Forward Oil Total:** 10.68 mL      **Reverse Oil Total:** 10.8 mL      **Volume Oil Total:** 21.48 mL  
**Forward Boards Crossed:** 267 Boards      **Reverse Boards Crossed:** 270 Boards      **Total Boards Crossed:** 537 Boards

	Start	Stop	Loads	Speed	Crossed	Start	End	Feet	T.Oil
1	2L	2R	3	14	111	0.0	3.9	3.9	4440
2	9L	9R	1	14	23	3.9	5.8	1.9	920
3	10L	10R	2	18	42	5.8	10.9	5.1	1680
4	11L	11R	3	18	57	10.9	18.5	7.6	2280
5	12L	12R	2	18	34	18.5	23.6	5.1	1360
6	2L	2R	0	18	0	23.6	42.0	18.4	0

	Start	Stop	Loads	Speed	Crossed	Start	End	Feet	T.Oil
1	2L	2R	0	30	0	42.0	35.0	-7.0	0
2	12L	12R	1	18	17	35.0	32.5	-2.5	680
3	11L	11R	2	18	38	32.5	27.4	-5.1	1520
4	10L	10R	4	18	84	27.4	17.2	-10.2	3360
5	9L	9R	3	18	69	17.2	9.6	-7.6	2760
6	8L	8R	1	14	25	9.6	7.7	-1.9	1000
7	2L	2R	1	14	37	7.7	5.8	-1.9	1480
8	2L	2R	0	14	0	5.8	0.0	-5.8	0

Conditioner:  
Type In or Select One

TransferType:  
Type In or Select One

Forward



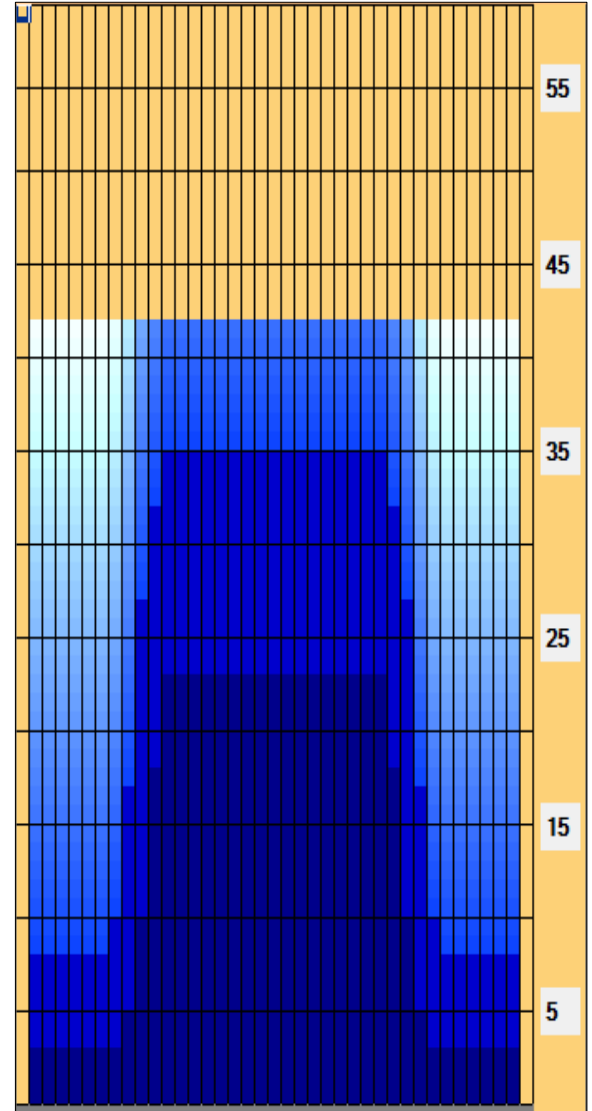
Reverse



Combined



Buff



Item	3L-7L:18L-18R	8L-12L:18L-18R	13L-17L:18L-18R	18L-18R:17R-13R	18L-18R:12R-8R	18L-18R:7R-3R
Description	Outside Track:Middle	Middle Track:Middle	Inside Track:Middle	Middle: Inside Track	Middle:Middle Track	Middle:Outside Track
Track Zone Ratio	5.75	1.6	1	1	1.6	5.75

