

RADAT 4 12 JA 20



Oil Pattern Distance: 33 Feet **Reverse Brush Drop:** 30 Feet **Oil Per Board:** 40 uL
Forward Oil Total: 9.6 mL **Reverse Oil Total:** 8.12 mL **Volume Oil Total:** 17.72 mL
Forward Boards Crossed: 240 Boards **Reverse Boards Crossed:** 203 Boards **Total Boards Crossed:** 443 Boards

	Start	Stop	Loads	Speed	Crossed	Start	End	Feet	T.Oil
1	2L	2R	1	10	37	0.0	0.0	0.0	1480
2	6L	6R	4	10	116	0.0	5.6	5.6	4640
3	6L	6R	3	14	87	5.6	11.5	5.9	3480
4	2L	2R	0	14	0	11.5	33.0	21.5	0

	Start	Stop	Loads	Speed	Crossed	Start	End	Feet	T.Oil
1	2L	2R	0	30	0	33.0	25.0	-8.0	0
2	6L	6R	3	22	87	25.0	15.7	-9.3	3480
3	6L	6R	4	18	116	15.7	5.5	-10.2	4640
4	2L	2R	0	14	0	5.5	0.0	-5.5	0

Conditioner:
Type In or Select One

TransferType:
Type In or Select One

Forward



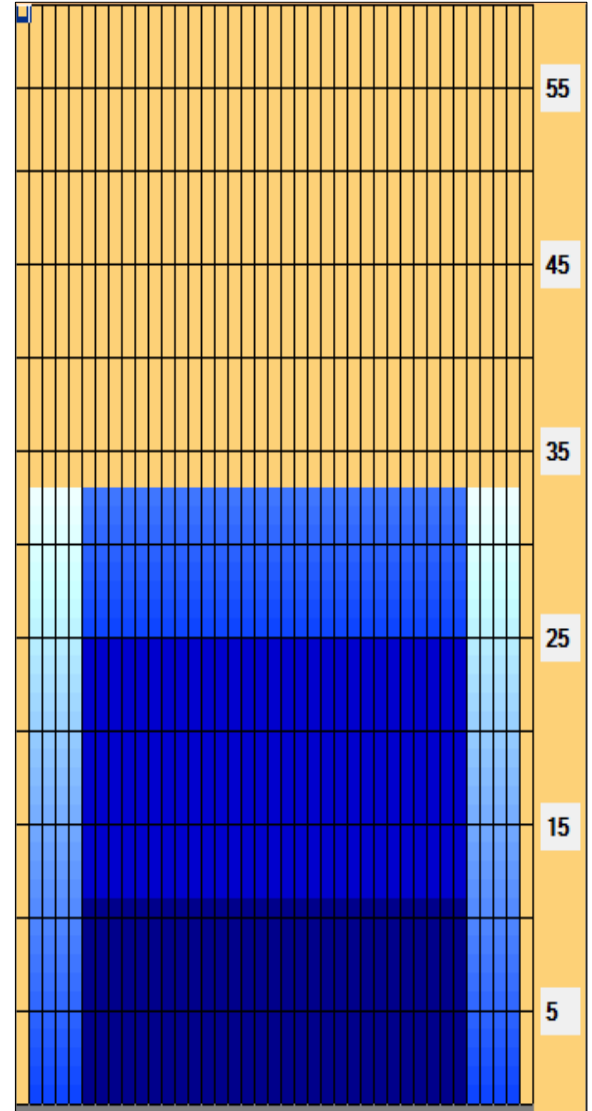
Reverse



Combined



Buff



Item	3L-7L:18L-18R	8L-12L:18L-18R	13L-17L:18L-18R	18L-18R:17R-13R	18L-18R:12R-8R	18L-18R:7R-3R
Description	Outside Track:Middle	Middle Track:Middle	Inside Track:Middle	Middle: Inside Track	Middle:Middle Track	Middle:Outside Track
Track Zone Ratio	2.27	1	1	1	1	2.27

