

RADAT 6 14 JA 22



Oil Pattern Distance: 38 Feet **Reverse Brush Drop:** 38 Feet **Oil Per Board:** 55 uL
Forward Oil Total: 21.725 mL **Reverse Oil Total:** 8.25 mL **Volume Oil Total:** 29.975 mL
Forward Boards Crossed: 395 Boards **Reverse Boards Crossed:** 150 Boards **Total Boards Crossed:** 545 Boards

	Start	Stop	Loads	Speed	Crossed	Start	End	Feet	T.Oil
1	2L	2R	3	10	111	0.0	2.8	2.8	6105
2	5L	5R	3	10	93	2.8	7.0	4.2	5115
3	6L	6R	3	10	87	7.0	11.2	4.2	4785
4	7L	7R	2	10	54	11.2	14.0	2.8	2970
5	8L	8R	2	10	50	14.0	16.8	2.8	2750
6	2L	2R	0	14	0	16.8	38.0	21.2	0

Forward Reverse More

	Start	Stop	Loads	Speed	Crossed	Start	End	Feet	T.Oil
1	2L	2R	0	30	0	38.0	15.0	-23.0	0
2	9L	9R	2	10	46	15.0	12.2	-2.8	2530
3	8L	8R	2	10	50	12.2	9.4	-2.8	2750
4	7L	7R	2	10	54	9.4	6.6	-2.8	2970
5	2L	2R	0	14	0	6.6	0.0	-6.6	0

Forward Reverse More

Conditioner:
Type In or Select One

TransferType:
Type In or Select One

Forward



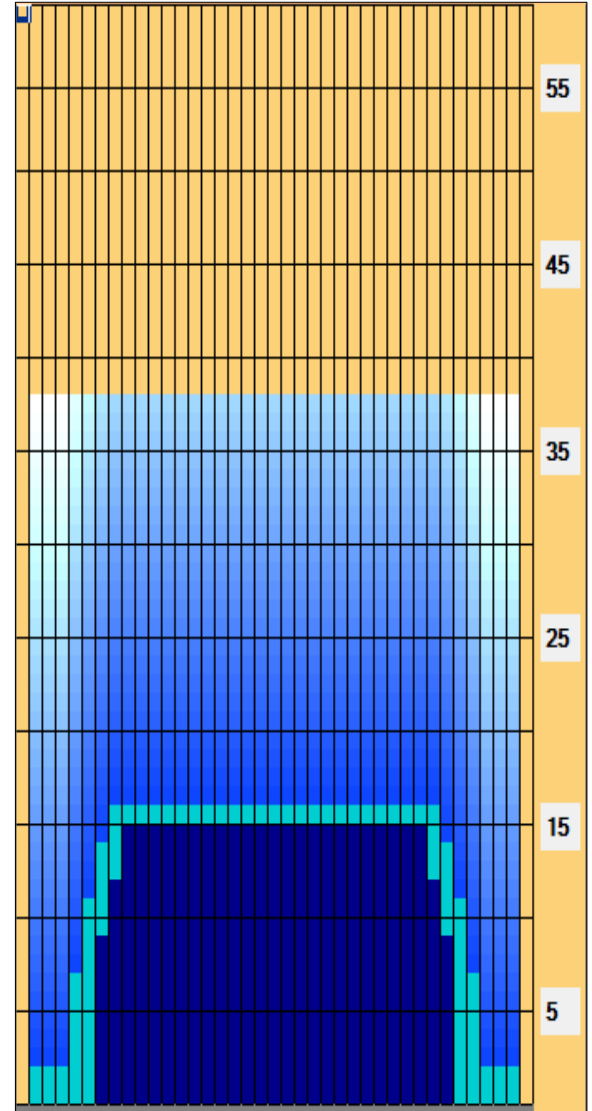
Reverse



Combined



Buff



Item	3L-7L:18L-18R	8L-12L:18L-18R	13L-17L:18L-18R	18L-18R:17R-13R	18L-18R:12R-8R	18L-18R:7R-3R
Description	Outside Track:Middle	Middle Track:Middle	Inside Track:Middle	Middle: Inside Track	Middle:Middle Track	Middle:Outside Track
Track Zone Ratio	2.79	1.02	1	1	1.02	2.79

