

# RKM kisa



**Oil Pattern Distance:** 39 Feet      **Reverse Brush Drop:** 25 Feet      **Oil Per Board:** 50 uL  
**Forward Oil Total:** 16.3 mL      **Reverse Oil Total:** 5.7 mL      **Volume Oil Total:** 22 mL  
**Forward Boards Crossed:** 326 Boards      **Reverse Boards Crossed:** 114 Boards      **Total Boards Crossed:** 440 Boards

	Start	Stop	Loads	Speed	Crossed	Start	End	Feet	T.Oil
1	2L	2R	2	14	74	0.0	1.9	1.9	3700
2	5L	5R	2	14	62	1.9	5.8	3.9	3100
3	6L	6R	2	14	58	5.8	9.7	3.9	2900
4	7L	7R	1	14	27	9.7	11.6	1.9	1350
5	8L	8R	1	18	25	11.6	14.1	2.5	1250
6	9L	9R	1	18	23	14.1	16.6	2.5	1150
7	10L	10R	1	18	21	16.6	19.1	2.5	1050
8	11L	11R	1	18	19	19.1	21.6	2.5	950
9	12L	12R	1	18	17	21.6	24.1	2.5	850
10	2L	2R	0	18	0	24.1	39.0	14.9	0

	Start	Stop	Loads	Speed	Crossed	Start	End	Feet	T.Oil
1	2L	2R	0	30	0	39.0	20.0	-19.0	0
2	8L	8R	1	22	25	20.0	16.9	-3.1	1250
3	7L	7R	1	22	27	16.9	13.8	-3.1	1350
4	6L	6R	1	18	29	13.8	11.3	-2.5	1450
5	4L	4R	1	18	33	11.3	8.8	-2.5	1650
6	2L	2R	0	10	0	8.8	0.0	-8.8	0

Conditioner:  
Type In or Select One

TransferType:  
Type In or Select One

Forward



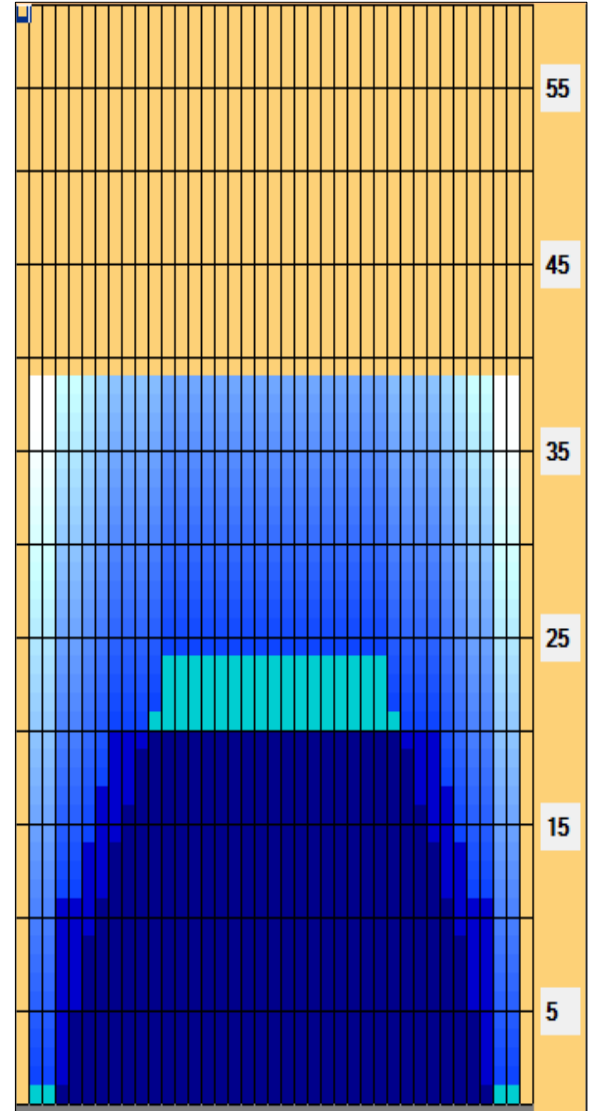
Reverse



Combined



Buff



Item	3L-7L:18L-18R	8L-12L:18L-18R	13L-17L:18L-18R	18L-18R:17R-13R	18L-18R:12R-8R	18L-18R:7R-3R
Description	Outside Track:Middle	Middle Track:Middle	Inside Track:Middle	Middle: Inside Track	Middle:Middle Track	Middle:Outside Track
Track Zone Ratio	2.86	1.14	1	1	1.14	2.86

