

# maalis mittelot ja SenVet turnaus



**Oil Pattern Distance:** 40 Feet      **Reverse Brush Drop:** 32 Feet      **Oil Per Board:** 40 uL  
**Forward Oil Total:** 12.28 mL      **Reverse Oil Total:** 8 mL      **Volume Oil Total:** 20.28 mL  
**Forward Boards Crossed:** 307 Boards      **Reverse Boards Crossed:** 200 Boards      **Total Boards Crossed:** 507 Boards

	Start	Stop	Loads	Speed	Crossed	Start	End	Feet	T.Oil
1	2L	2R	3	14	111	0.0	3.9	3.9	4440
2	4L	4R	1	14	33	3.9	5.8	1.9	1320
3	6L	6R	1	18	29	5.8	8.3	2.5	1160
4	8L	8R	2	18	50	8.3	13.4	5.1	2000
5	4L	4R	1	22	33	13.4	16.5	3.1	1320
6	12L	12R	3	22	51	16.5	25.8	9.3	2040
7	2L	2R	0	22	0	25.8	40.0	14.2	0

Forward Reverse More

	Start	Stop	Loads	Speed	Crossed	Start	End	Feet	T.Oil
1	2L	2R	0	30	0	40.0	28.0	-12.0	0
2	12L	12R	2	22	34	28.0	21.8	-6.2	1360
3	10L	10R	2	22	42	21.8	15.6	-6.2	1680
4	8L	8R	1	22	25	15.6	12.5	-3.1	1000
5	6L	6R	1	18	29	12.5	10.0	-2.5	1160
6	4L	4R	1	18	33	10.0	7.5	-2.5	1320
7	2L	2R	1	18	37	7.5	5.0	-2.5	1480
8	2L	2R	0	14	0	5.0	0.0	-5.0	0

Forward Reverse More

Conditioner:  
Type In or Select One

TransferType:  
Type In or Select One

Forward



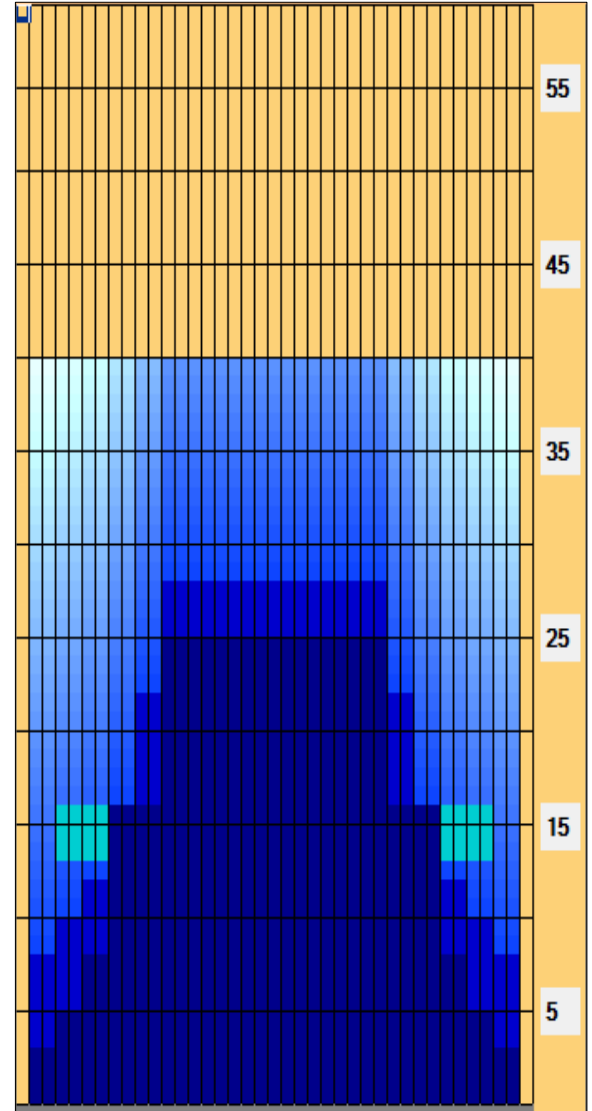
Reverse



Combined



Buff



Item	3L-7L:18L-18R	8L-12L:18L-18R	13L-17L:18L-18R	18L-18R:17R-13R	18L-18R:12R-8R	18L-18R:7R-3R
Description	Outside Track:Middle	Middle Track:Middle	Inside Track:Middle	Middle: Inside Track	Middle:Middle Track	Middle:Outside Track
Track Zone Ratio	2.64	1.34	1	1	1.34	2.64

