

# RADAT 1 9 JA 17



**Oil Pattern Distance:** 41 Feet      **Reverse Brush Drop:** 36 Feet      **Oil Per Board:** 40 uL  
**Forward Oil Total:** 9.88 mL      **Reverse Oil Total:** 8.2 mL      **Volume Oil Total:** 18.08 mL  
**Forward Boards Crossed:** 247 Boards      **Reverse Boards Crossed:** 205 Boards      **Total Boards Crossed:** 452 Boards

	Start	Stop	Loads	Speed	Crossed	Start	End	Feet	T.Oil
1	2L	2R	1	14	37	0.0	0.0	0.0	1480
2	10L	10R	5	14	105	0.0	9.9	9.9	4200
3	10L	10R	5	18	105	9.9	22.6	12.7	4200
4	2L	2R	0	22	0	22.6	41.0	18.4	0

	Start	Stop	Loads	Speed	Crossed	Start	End	Feet	T.Oil
1	2L	2R	0	30	0	41.0	31.0	-10.0	0
2	10L	10R	4	22	84	31.0	18.6	-12.4	3360
3	10L	10R	4	18	84	18.6	8.4	-10.2	3360
4	2L	2R	1	14	37	8.4	6.5	-1.9	1480
5	2L	2R	0	14	0	6.5	0.0	-6.5	0

Conditioner:  
Type In or Select One

TransferType:  
Type In or Select One

Forward



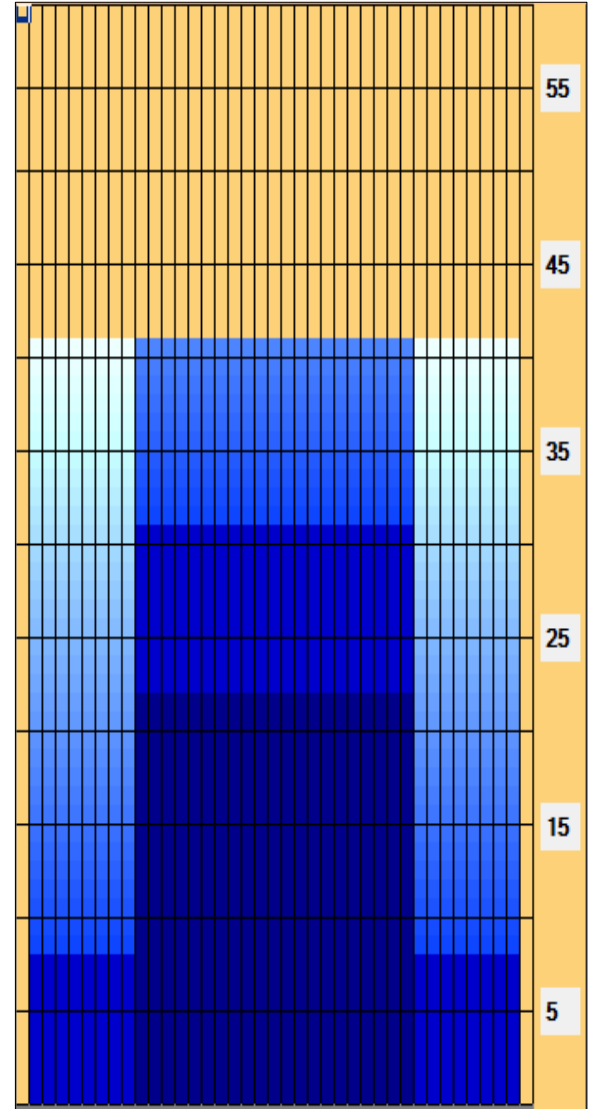
Reverse



Combined



Buff



Item	3L-7L:18L-18R	8L-12L:18L-18R	13L-17L:18L-18R	18L-18R:17R-13R	18L-18R:12R-8R	18L-18R:7R-3R
Description	Outside Track:Middle	Middle Track:Middle	Inside Track:Middle	Middle: Inside Track	Middle:Middle Track	Middle:Outside Track
Track Zone Ratio	10	1.56	1	1	1.56	10

